



## Caso Clínico

### Infrarenal abdominal aortic aneurysm in a patient with *situs inversus totalis* and its therapeutic implications

#### *Aneurisma de aorta abdominal infrarenal en paciente con situs inversus totalis y sus implicaciones terapéuticas*

Oliver Bonnelly, Rubén Peña, José Carnicero, Francisco S. Lozano Sánchez

Vascular Surgery Department. Hospital Universitario de Salamanca. Salamanca, Spain

#### Abstract

**Background:** *situs inversus totalis* (SIT) is a congenital pathology where the organs acquire a disposition contrary to the usual, "mirror image".

**Case report:** we present a 58-year-old man with known SIT, followed-up by the vascular surgery service for an infrarenal abdominal aortic aneurysm (AAA) with a transverse diameter of 42 mm with growth to 56 mm, repaired by transabdominal approach, and with satisfying results.

**Discussion:** the coexistence of SIT and AAA is extremely rare, its prevalence being unknown. This publication discusses the possible therapeutic implications of AAA in this situation.

#### Keywords:

*Situs inversus*.  
Abdominal aortic aneurysm.

#### Resumen

**Introducción:** el *situs inversus totalis* (SIT) es una patología congénita en la que los órganos adquieren una disposición contraria a la habitual: "imagen en espejo".

**Caso clínico:** presentamos a un varón de 58 años con conocido SIT en seguimiento por el servicio de cirugía vascular por un aneurisma de la aorta abdominal (AAA) infrarenal de 42 mm de diámetro transverso con crecimiento hasta los 56 mm, reparado mediante abordaje transabdominal y con resultado final satisfactorio.

**Discusión:** la coexistencia de SIT y AAA es extremadamente rara y su prevalencia se desconoce. La presente publicación trata las posibles implicaciones terapéuticas de los AAA en tal situación.

#### Palabras clave:

*Situs inversus*.  
Aneurisma de aorta abdominal.

Recibido: 06/06/2022 • Aceptado: 02/07/2022

Conflicto de interés: los autores declaran no tener ningún conflicto de interés.

Bonnelly O, Peña R, Carnicero J, Lozano Sánchez FS. Infrarenal abdominal aortic aneurysm in a patient with *situs inversus totalis* and its therapeutic implications. *Angiología* 2022;74(5):253-256

DOI: <http://dx.doi.org/10.20960/angiologia.00433>

#### Correspondencia:

Francisco S. Lozano Sánchez. Vascular Surgery Department. Hospital Universitario de Salamanca. Paseo de San Vicente, s/n. 37007 Salamanca, Spain  
e-mail: [lozano@usal.es](mailto:lozano@usal.es)

## INTRODUCTION

*Situs inversus totalis* (SIT) is a congenital pathology, characterized by the disposition of the thoraco-abdominal organs contrary to the usual, acquiring a “mirror image”. Its prevalence is estimated at 1 in 10,000 live births with no predilection for sex (1). It presents a predominantly autosomal recessive pattern, but an autosomal dominant and X-linked pattern has also been described, although less prevalent (2). It is believed to occur due to a dysregulation of the Sonic Hedgehog (Shh) protein during the third week of embryonic development, which is responsible for the expression of the determining factors of the right-left axis (3).

Most of these patients are unknown unless they have symptoms. SIT can be associated with other congenital pathologies such as pancreatic fibrosis, renal dysplasia, biliary atrophy, and congenital heart disease (4). The coexistence of SIT and Abdominal Aortic Aneurysm (AAA) is extremely rare, and its prevalence is unknown (5,6).

Currently, there is no consensus on which is the optimal therapeutic approach in AAA with SIT, however, good results have been described using the transabdominal, right retroperitoneal and endovascular approaches (6-8).

The objective of this publication is to comment on this peculiar association (SIT + AAA) and its possible implications when surgery on AAA is indicated. By last, patient has agreed to allow the authors to publish their case details and images. He has consented the publication of his case details and images

## CASE REPORT

We report a case of a 58-year-old male patient followed-up by our vascular surgery department due to an infrarenal AAA with a transverse diameter of 42 mm, with growth of up to 56 mm (Fig. 1). As a history of interest, the patient has hypertension, diabetes *mellitus*, atrial fibrillation, Crohn’s disease, and SIT.

Under general anesthesia, the AAA was excluded, and the aortic continuity was replaced by inserting an aorto-biliac Dacron prosthesis. The surgical procedure was performed through a transabdominal

approach from the right side of the patient, with intestinal scrolling towards the left abdomen, unlike usual, due to the anatomical disposition of the root of the mesentery (Fig. 2).

The surgery and the postoperative period occurred without complications and the patient was discharged on the sixth postoperative day. After 30 days, the patient has no incidents in the first review. Currently 3 months have passed since the intervention.

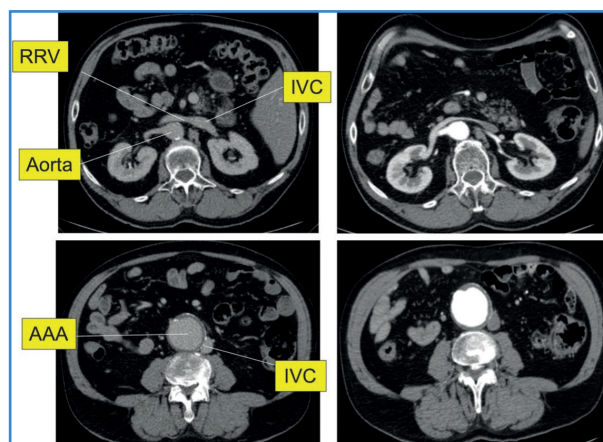


Figure 1.

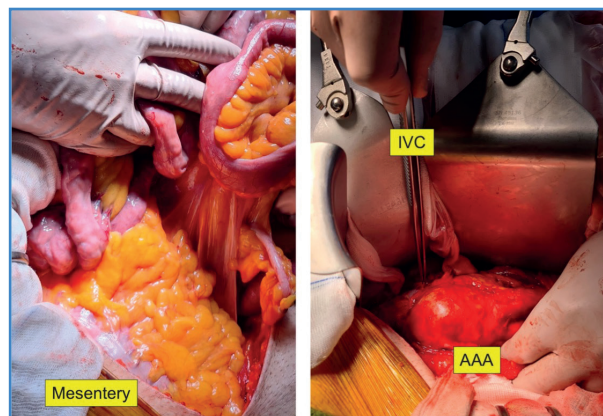


Figure 2.

## DISCUSSION

SIT is a rare condition that tends to go unnoticed unless patients present symptoms or are discovered during an imaging test or some surgical act (9).

Its presence may increase the surgical risk either due to associated congenital anomalies or due to anatomical changes derived from the reverse arrangement of the thoraco-abdominal organs (3). The association of SIT with AAA is rare and its prevalence is unknown (3).

There are 11 published cases of AAA in patients with SIT in the literature between the first case in 1989 and the present publication (3-13) (Table I).

The reported cases, like ours, did not present any added difficulty during the surgical act. These have been performed using different types of approaches such as the transabdominal, right retroperitoneal, and endovascular approach (4-6).

The first case reported, in 1989 by Ricci cols. was a 79-year-old male patient who underwent an infra-renal AAA surgery using a transabdominal approach and placement of a Dacron prosthesis. The surgery proceeded without complications and the patient had a postoperative fever that resolved adequately (9).

Kato et al. reported in 2006 a 75-year-old patient with ruptured AAA and SIT who underwent urgent intervention through a transabdominal approach with a bifurcated aortic prosthesis that was performed without incident, the presence of SIT not being a problem for the procedure (7).

On the other hand, Riera et al. in 2015, intervened in a 69-year-old man with an intact AAA and SIT, using a transabdominal approach with a mini-median laparotomy from the right side of the patient with intestinal sliding to the left side and placement of aorto-iliac Dacron prosthesis. The patient recovered without complications and without incidents in the 4-year follow-up (5).

Recently, in 2020, Gatta et al. have performed a right retroperitoneal approach in a 73-year-old patient with a pararenal AAA. Aorto-aortic Dacron graft and exclusion was performed. The patient was discharged on the sixth postoperative day and there were no incidences in CT follow-up after 6 months (4).

In 2010, Chan et al. performed the first published AAA in a patient with SIT using an endovascular approach in an 81-year-old patient. Due to the history of ischemic heart disease and open colectomy, the decision was made to exclude the AAA using an endovascular approach. The procedure was carried out without incident and the patient was discharged on the third postoperative day. After six months, the patient showed no complications on the follow-up computed tomography (6).

Although the transabdominal approach is the most frequently practiced (8 cases), there is no consensus

**Table I.** AAA associated with *situs inversus totalis* (SIT). Literature review

Case No.	Authors, year	Age / gender	AAA*	Approach	Result	Follow-up
1	Ricci et al. (9), 1989	79 / M	74 mm	Transabdominal	Favorable	15 months
2	Huston et al. (10), 1990	84 / M	70 mm	Transabdominal	Favorable	NA
3	Occhionorelli et al. (11), 1998	76 / W	NA	Transabdominal	Favorable	NA
4	Baccellieri et al. (12), 2006	NA	NA	Transabdominal	Favorable	NA
5	Kato et al. (7), 2006	75 / M	NA	Transabdominal	Favorable	9 months
6	Kimura et al. (8), 2008	80 / W	85 mm	Transabdominal	Favorable	6 months
7	Chan et al. (6), 2010	81 / M	75 mm	Endovascular	Favorable	6 months
8	Riera et al. (5), 2015	69 / M	60 mm	Transabdominal	Favorable	4 years
9	Cwinn et al. (13), 2016	82 / M	90 mm	Right retroperitoneal	Favorable	NA
10	Gatta et al. (4), 2020	73 / M	60 mm	Right retroperitoneal	Favorable	6 months
11	Télliez et al. (3), 2020	56 / W	80 mm	Transabdominal	Favorable	3 months
12	Actual case. 2021	58 / M	56 mm	Transabdominal	Favorable	3 months

AAA: abdominal aortic aneurysm; SIT: situs inversus totalis; NA: not available; \*Transversal diameter.

on which is the optimal therapeutic approach in these patients. However, despite the different approach methods used in the literature, asymptomatic SIT does not appear to be a major surgical problem during AAA surgery and does not present additional challenges compared to patients with a normal anatomical disposition.

## REFERENCES

1. Arrabal M, Jiménez A, Palao F. Situs inversus totalis. *Imagen diagn.* 2011;2(2):78.
2. Osorio H, Flores L, Liliam Jayne, Castillo R. Situs Inversus Totalis y Cardiopatía congénita: Diagnóstico casual en un lactante con neumonía. *CIMEL* 2010;15(2):85-8.
3. Téllez D, González A, Barón V, Pradilla J. Aneurisma de aorta abdominal en paciente con situs inversus totalis. *CirCir* 2020;88(1):79-82.
4. Gatta E, Schiavon S, Pagliariccio G, Persechini P, Carbonari L. Pararenal aortic aneurysm in situs inversus totalis: open repair with right retroperitoneal approach. *J Surg Case Rep* 2020;7:1-3.
5. Riera C, Pérez P, Esteban C, Jiménez M, Llagostera S. Situs inversus totalis and abdominal aortic aneurysm: Surgical repair of an extremely uncommon association. *Int J Surg Case Rep* 2015;10:216-8.
6. Chan Y, Ting A, Qing K, Cheng S. Successful endovascular infrarenal aneurysm repair in a patient with situs inversus totalis. *Ann Vasc Surg* 2010;24(8):1134.e5-7.
7. Kato T, Takagi H, Sekino S, Manabe H, Matsuno Y, Umamoto T. Abdominal aortic aneurysm in situs inversus totalis. *Ann Vasc Surg* 2006;20(2):267-70.
8. Kimura N, Kawahito K, Ito S. Rupture of an abdominal aortic aneurysm in a patient with a situs inversus totalis: report of a case. *Surg Today* 2008;38(3):249-52.
9. Ricci M, Deshmukh N. Situs inversus and abdominal aortic aneurysm a case report. *Vasc. Surg* 1989;23(5):413-6.
10. Huston J, Nicholas G. Situs Inversus Totalis and an Infrarenal Abdominal Aortic Aneurysm: Case Report. *Vasc Surg* 1990;24(5):372-4.
11. Occhionorelli S, Navarra G, Santini M, Carcoforo P, Sartori A, Pollinzi V, et al. Symptomatic abdominal aortic aneurysm and "situs viscerum inversus." Diagnostic and therapeutic approach. *J Cardiovasc Surg (Torino)* 1998;39(1):31-3.
12. Baccellieri D, Mirenda F, Mandolino T, La Spada M, Stilo F, Spinelli F. Symptomatic aorto-iliac aneurysm and situs viscerum inversus: case report. *Chir Ital* 2006;58(1):113-6.
13. Cwinn M, Morzycki A, Lee M, Midgley P. Repair of juxtarenal abdominal aortic aneurysm in a patient with situs inversus totalis using a retroperitoneal approach. *J Vasc Surg C Inn Tec* 2016;2(3):92-4.